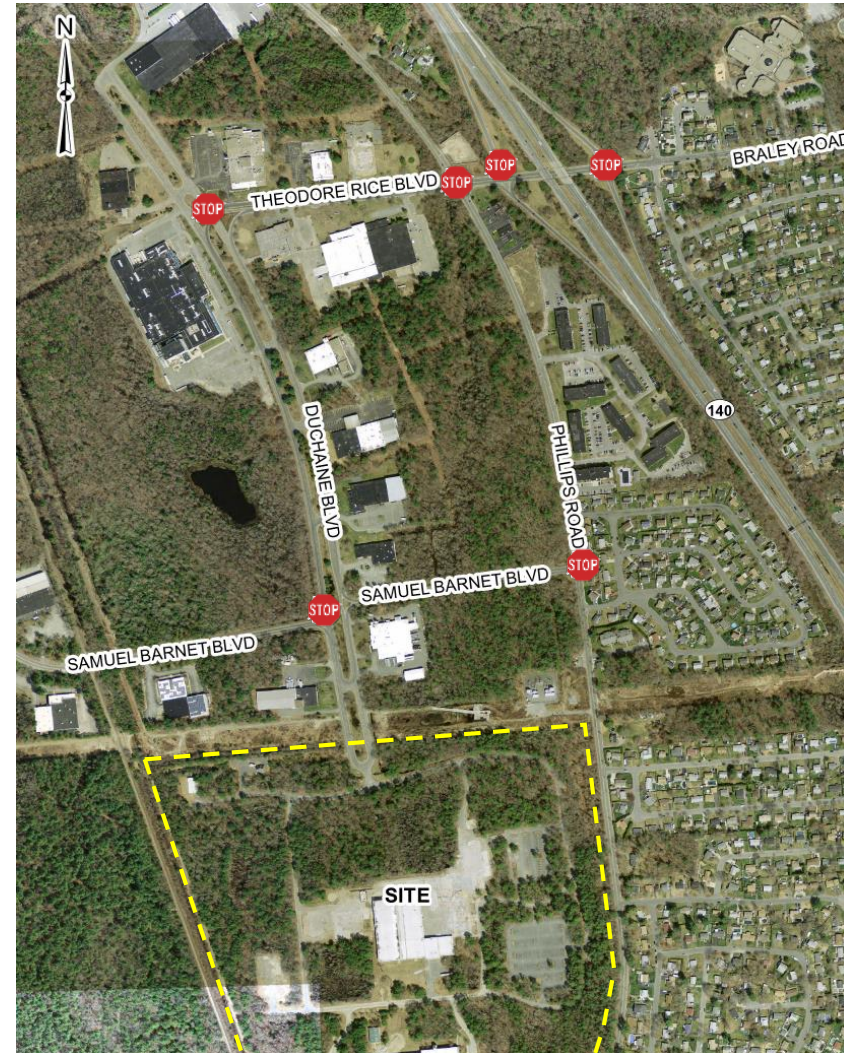


**Parallel Products of  
New England, Inc.  
Solid Waste Facility  
Traffic Impact Study Summary**

100 Duchaine Boulevard,  
New Bedford, MA

## Proposed Solid Waste Facility

- Municipal Solid Waste & Construction and Demolition Material
  - 1,500 tpd
- Biosolids
  - 50 tpd (dried)
- Truck deliveries accepted between 5:00 AM and 9:00 PM



## Turning Movement Counts

- June 13, 2018
- Seven intersections
- 7:00-9:00 AM &  
3:00-6:00 PM

## Automatic Traffic Recorder




- June 13, 2018 – June 14, 2018
- Duchaine Boulevard
- 48-Hour

## Peak Hours

- 7:30-8:30 AM &  
3:00-4:00 PM



## Safety

- 5 year period (2011-2015)
- Statewide/District 5 Average – **0.57** Crashes per Million Entering Vehicles
- 2 locations with crash rates exceeding State/District average
- 2 pedestrian related crashes 
- 1 bicycle related crash 
- 1 fatal crash (speed related) 
- Sight Distance requirements satisfied



- Estimated vehicle trips based on comparable solid waste facilities
- Employee trips expected outside traffic peak hours
- Regional trips – to/from site via Route 140
- Truck restriction along Phillips Road
- AM/PM Peak Generation: ~15 trucks/hour
- Daily Generation: ~150 trucks/day  
~75 employees/day
- Conservative estimate
  - No reduction for materials transported by rail
  - Based on 100% of allowable tonnage transported by truck

- Negligible impact on traffic operations
- Less than 3 second/veh delay increase from No Build conditions
- 11% increase in daily traffic on Duchaine Boulevard
- No safety impacts
- *Does not constitute a danger to the public health, safety, or the environment*



# QUESTIONS

